

OPERATING INSTRUCTIONS

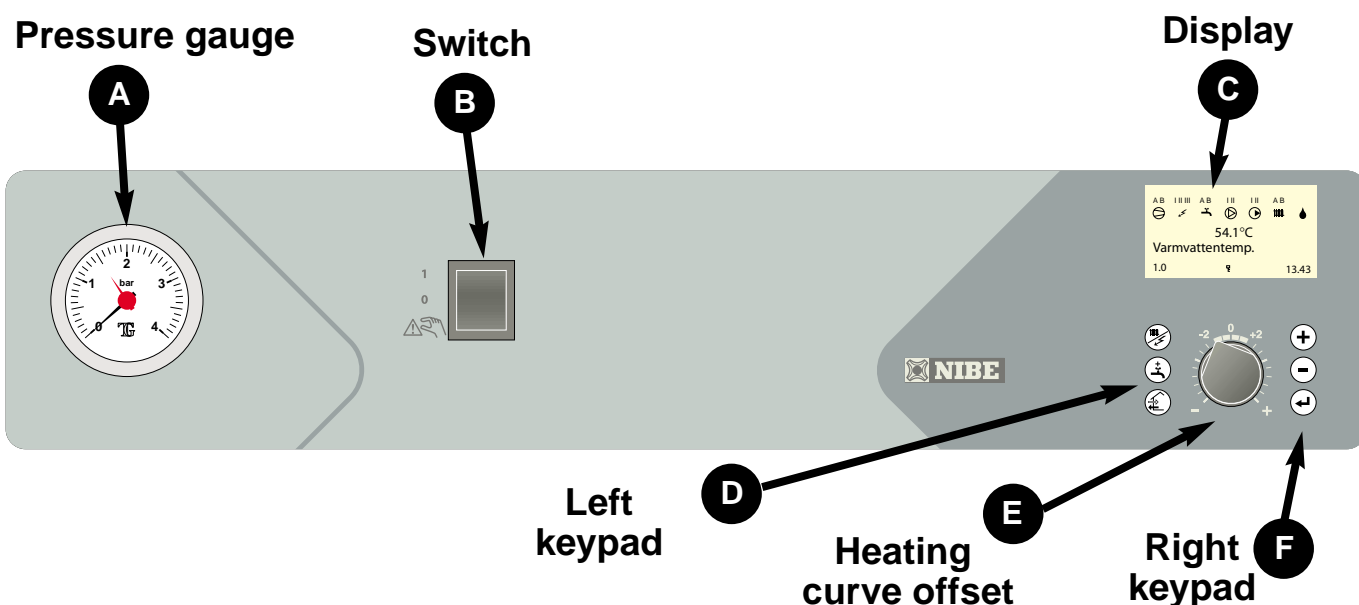
FIGHTER 360P

General

These operating instructions describe the most important functions and the current maintenance requested by FIGHTER 360 and its ventilation equipment.

Regarding component location and detailed information check "Installation and Maintenance Instructions".

Front panel



Explanation

A Pressure gauge


The radiator circuit pressure is displayed here. Normal pressure is 0.5 - 1.5 bar.

B Switch

with three positions 1 - 0 - :

1 Normal mode. All control functions connected.

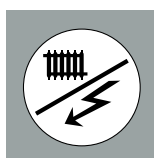
0 Heat pump off.

 Standby. This position is used in the event of operating disturbances.

C Display

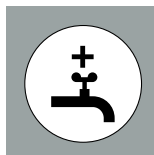
Här visas symboler, värden, namn på aktuell meny samt menynummer.

D Left keypad



This button is used to set the required operating mode

- Winter mode
- Summer mode
- Spring/Autumn mode



The Extra hot water function is activated using this button.

- 24 hours
- Periodic extra hot water
- Not selected/Extra hot water function deactivated.



This button is used to change the fan speed. Return to normal speed occurs automatically (Does not apply however in the Off position).

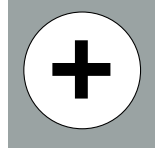
- Speed II
- Off
- Speed I
- Normal

E Offset heating curve



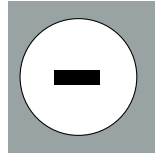
This knob is used to change the room temperature. Turning clockwise increases the room temperature. When the knob is turned menu 2.0 is shown on the display screen and the value for the calculated supply temperature changes.

F Right keypad



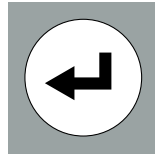
Plus button

This button is used to scroll through the menu system (forwards) or increase the value of the selected parameter.



Minus button

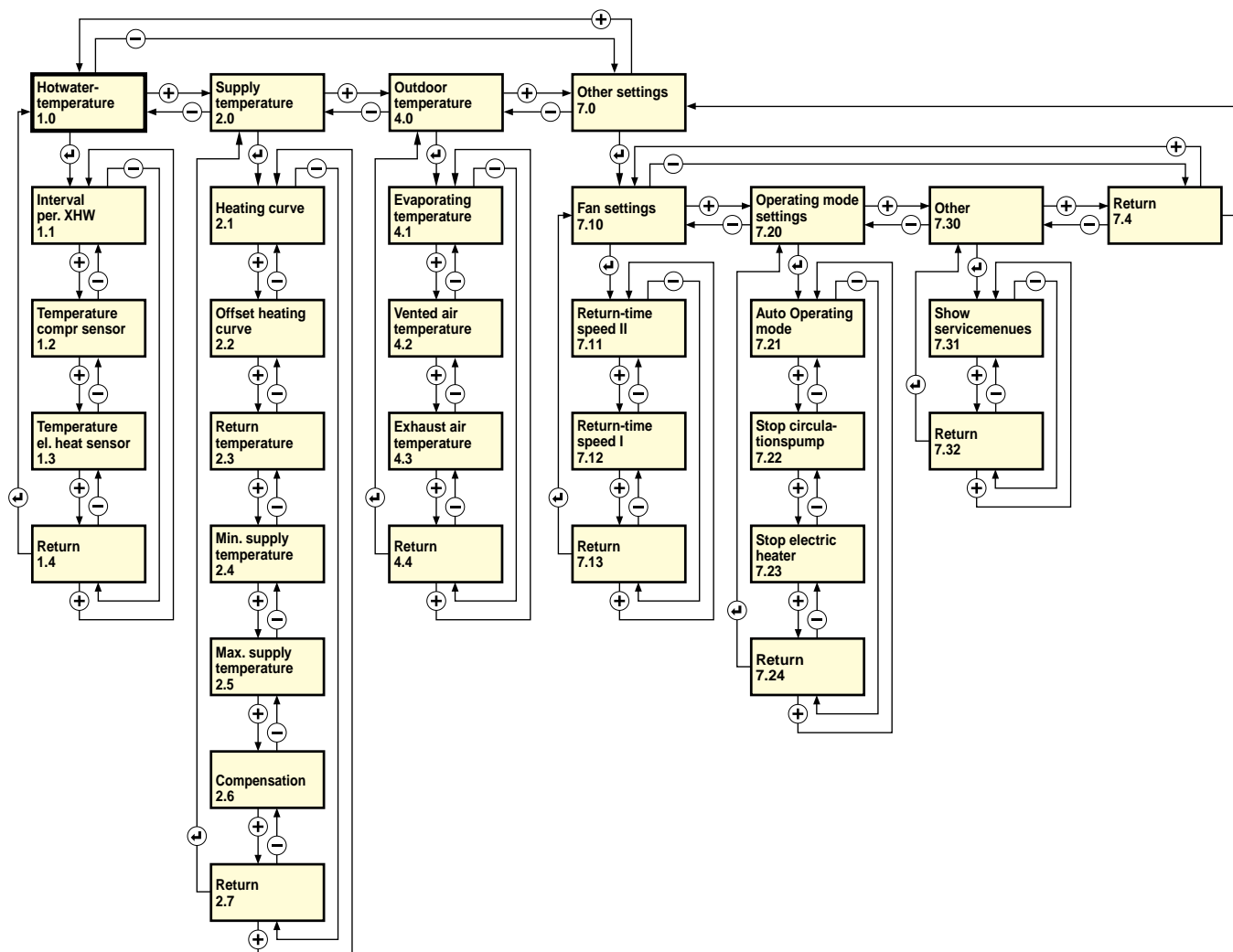
This button is used to scroll through the menu system (backwards) or lower the value of the selected parameter.



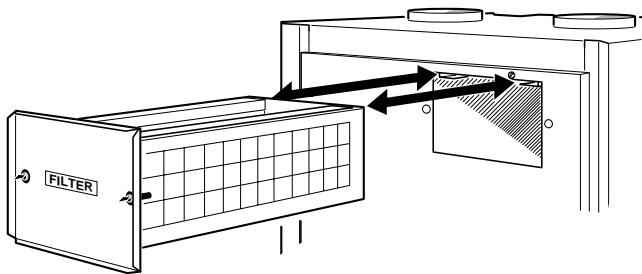
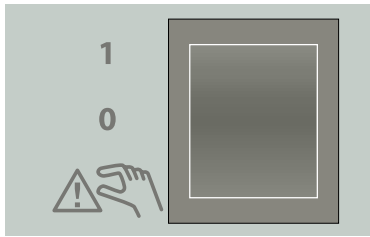
Enter button

This button is used to select a lower menu in the menu system, to activate a parameter change as well as confirm a parameter change.

Menu system



Cleaning the air filter



The heat pump's air filter needs to be cleaned regularly (approximately 4 — 5 times per year). The interval between cleaning operations varies and depends on the amount of dust in the exhaust air.

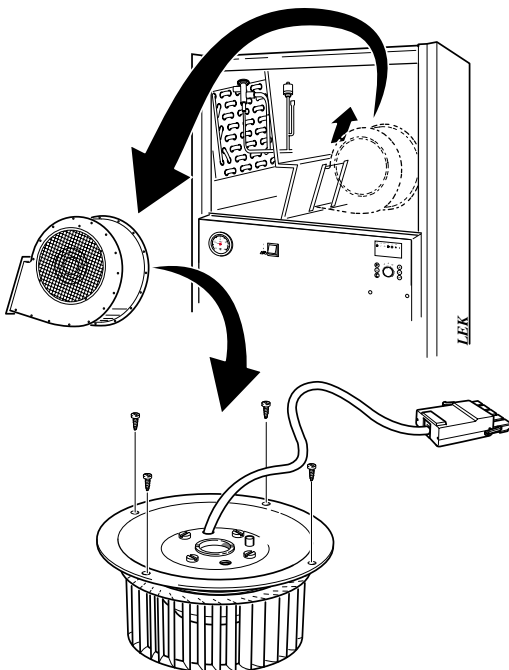
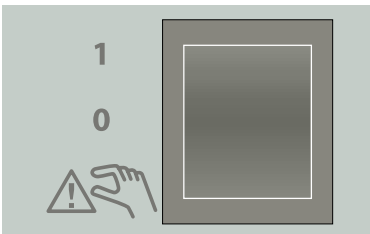
- Set the switch to "0".
- Open the upper front cover by pulling it out by the lower edge, then lifting it up.
- Release the filter holder by turning the two black knobs a quarter of a turn anticlockwise.
- Pull out the holder, take out the filter and shake off any dirt. If the filter is very dirty, turn it upside-down and wash it carefully with water. Check that the filter is not damaged. New original filters can be ordered from NIBE.
- Assembly takes place in the reverse order.

FILTER-ALARM
1.0

FILTER-ALARM

This information is shown every three months and is a call for the air filter to be cleaned. The information disappears when the filter has been cleaned and the main power switch is set to 1 again.

Cleaning the fan



Clean the fan every other year by taking it out of the heat pump and carefully brushing the vanes clean.

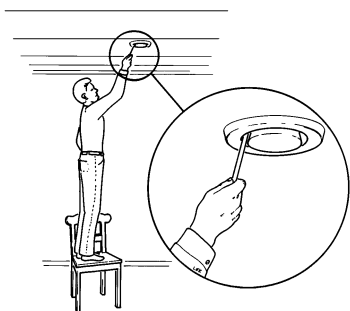
- Set the switch to "0".
- Open the upper front cover by pulling it out by the lower edge, then lifting it up.
- To open the inner cover, unscrew the screws in the outer edges of the cover.
- The fan is removed by unscrewing the four screws as illustrated and disconnecting the fan cable connector.
- After removing the fan check the condensation tray under the evaporator. At the same time, check that the condensation hose connection is not blocked.
- Assembly takes place in the reverse order.

NOTE!

Avoid distorting the fan blades as this causes imbalance.

Do not use water or detergents.

Cleaning the ventilation devices



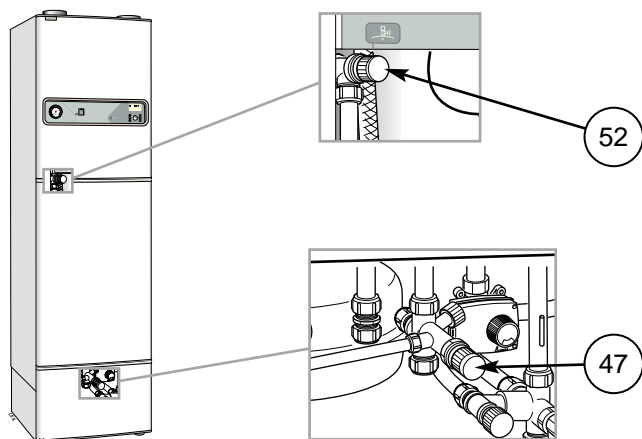
The building's ventilation devices should be cleaned regularly with a small brush to keep the correct ventilation.

The device settings must not be changed.

NOTE! If you take down more than one ventilation device for cleaning, do not mix them up.

Check that the ventilation opening (84), behind the lower front cover, is not blocked. Clean if necessary.

Checking the safety valves



FIGHTER 360P has two safety valves, one for the heating system and one for the water heater.

The heating system's safety valve (52) must be completely tight, but the hot water safety valve (47) may occasionally release some water after hot water has been used. This is because the cold water, which enters the water heater to replace the hot water, expands when heated causing the pressure to rise and the safety valve to open.

Check both the pressure relief valves regularly. Check one valve at a time as follows:

- Open the valve.
- Check that water flows through the valve.
- Close the valve.
- The heating system may need to be refilled after checking the safety valve (52), see the section Commissioning and adjustment — Filling the heating system.

Extract air temperature

5.0 °C
Vented air temp.
4.2

Check that the temperature of the extract air (menu 4.2) is clearly lower than the room temperature when the compressor is operational, also see section Dealing with malfunctions — High extract air temperature. It is normal that the extract air temperature varies.

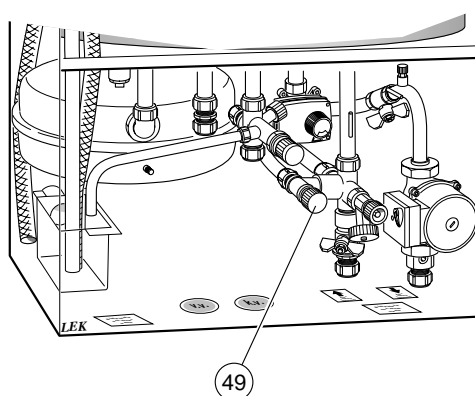
Alarm

Quite a few alarms in the menu for FIGHTER 360P are reset by first switching off the heat pump, followed by an immediate switch on.

- Set the switch on position "0" and wait for at least five seconds.
- Reset the switch to position "1".
- If repeatedly indicating alarms check "Installation and Maintenance Instructions" section "Dealing with malfunctions" - "Alarm indications on the display".

Filling the water heater and the heating system

- Open the filling valve (49). The boiler part of the heat pump and the radiator system are now filled with water.
- After a while the pressure gauge will show rising pressure.
- Turn the safety valve (52) until the boiler pressure reaches the normal working range (0.5 - 1.5 bar).



NOTE!

The product's serial number should always be stated with all correspondence with NIBE.

089 _ _ _ _ _



NIBE AB
SWEDEN

Box 14
Järnväggsgatan 40
SE- 285 21 MARKARYD

Tel: +46 -(0)433 - 73 000
Fax: +46 -(0)433 - 73 190
www.nibe.com